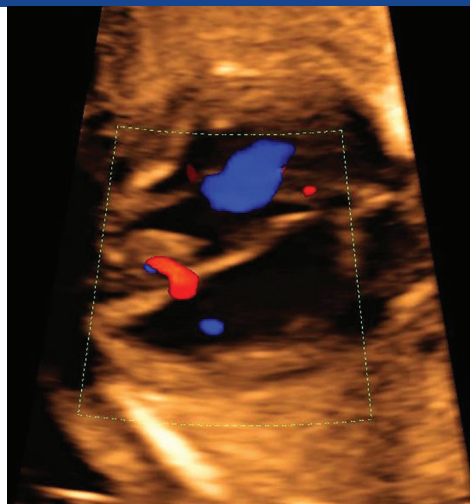


UCLA

David Geffen School of Medicine

14th Annual

UCLA Fetal Echocardiography Symposium



An In-Person and Live Virtual Education Conference

Course Director: Mark Sklansky, MD

Saturday, October 19, 2024

**Iris Cantor Auditorium
Geffen Hall, UCLA Campus
885 Tiverton Dr.
Los Angeles, CA 90095**

Partnering with

HOPEFUL HEARTS 

The Ava Efune Fund



UCLA



Childrens Hospital

7:00 am **Breakfast, on-site registration**

7:40 am **Live Streaming Opens**

8:00 am **Welcome and Introduction**

Mark Sklansky, MD

Session 1 **Moderators**

Tracy Anton, RDMS, RDCS & Yalda Afshar, MD

8:15 am **2024 Guidelines: Fetal Cardiac Screening and Fetal Echocardiography**

Yalda Afshar, MD

8:40 am **Fetal Cardiac Image Optimization: 2D and Color Doppler**

Marybeth Tomory, RDMS

9:05 am **Is It Normal, Suboptimal or Abnormal?**

Mishella Perez, RDMS, RDCS

9:30 am **Round Table Discussion: Routine Quantitative Assessment**

*Pro: Jay Pruetz, MD, FASE vs. Anti: Fraser Golding, MD, FRCPC,
followed by Panel Discussion*

9:55 am **Break**

Session 2 **Moderators**

Gary Satou, MD and Mishella Perez, RDMS, RDCS

10:15 am **ASD, VSD and AV Canal: Pearls for Prenatal Detection and Evaluation**

Jay Pruetz, MD, FASE

10:40 am **Tips for Prenatal Detection of Pulmonary Venous Abnormalities**

Tracy Anton, RDMS, RDCS

11:05 am **Fetal Arrhythmias: Basics of Evaluation and Management**

Mark Sklansky, MD

11:30 am **Parent Testimonial: Terra Chez**

11:40 am **Patient Testimonials—Children Speak For Themselves!**

12:00 pm **Lunch**



Session 3

Moderators

Marybeth Tomory, RDMS & Nita Doshi, MD

1:00 pm

Three-Vessel View: Normal and Abnormal

Tracy Anton, RDMS, RDCS

1:25 pm

Evaluation of Outflow Tract Abnormalities: TOF/TGA/AS/PS

Gary Satou, MD

1:50 pm

Small Left Heart: Normal vs Coarctation vs HLHS

Pina Patel, MD

2:15 pm

Degraded Acoustic Windows/Limited Visualization: Legal Implications

Jeff Grass, Esq. (JD)

2:40 pm

Round Table Discussion: Fetal Cardiac Screening vs Fetal Echocardiography

Gary Satou, MD & Nita Doshi, MD followed by Panel Discussion

3:05 pm

Break

Session 4

Moderators

Fraser Golding, MD, FRCPC & Pina Patel, MD

3:20 pm

Fetal Growth Restriction: The Heart of the Matter

Greggory DeVore, MD, FACOG, FAIUM

3:45 pm

Live Scanning Demonstration

Tracy Anton, RDMS, RDCS

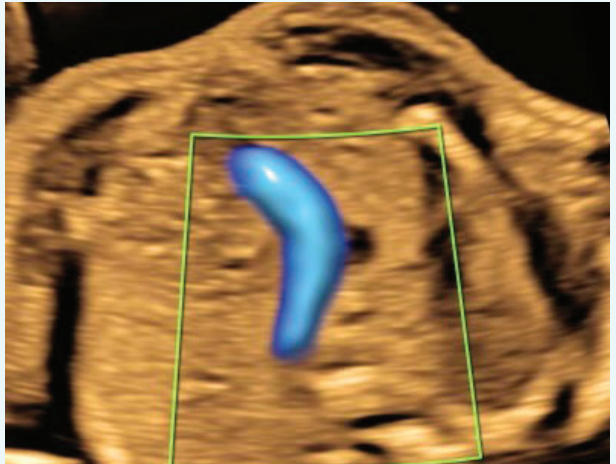
4:10 pm

Live, Hands-On Scanning for Registrants (limited to reserved guests)

Mishella Perez, RDMS, RDCS, Gary Satou, MD, Fraser Golding, MD, FRCPC, Marybeth Tomory, RDMS, Greggory DeVore, MD, FACOG, FAIUM & Sonia Voleti, MD

5:30 pm

Adjourn



General Information

In-Person & Virtual Registration Fees

USA Residents: \$200

International Residents (non-USA): \$100

(Optional) Hands-on Workshop

(4:10 pm to 5:15 pm): \$25

Limited spaces—reserve early!

To add the hands-on workshop, registrants need to be enrolled in the in-person symposium

Location

Iris Cantor Auditorium
Geffen Hall, UCLA Campus
885 Tiverton Dr.
Los Angeles, CA 90095

Parking and Directions

From the 405 freeway, exit Wilshire Blvd., East toward Westwood. Turn left on Westwood Blvd. and turn right on Le Conte Ave. Then, turn left on Tiverton Ave. Once you turn in on Tiverton, go straight into the Geffen Hall parking structure labeled "Visitor Parking 18 & 27". Proceed left to "Visitor Parking 18". Please park in the "Visitor Parking 18" Lot.

Please use the pay-by-plate station to purchase your parking permit. Participants are responsible for their own parking charges at a rate of \$15 per vehicle. The Geffen Hall Auditorium is located at the intersection of Le Conte Ave. and Tiverton Ave.

The 14th Annual UCLA Fetal Echocardiography Symposium will also be available through a live virtual meeting web platform.

- Attendees who choose to attend the live virtual activity will receive a virtual meeting link and password to access the live virtual conference.
- All registrants (live or virtual) will be provided the opportunity to review recorded sessions up to 3 weeks following the conference.
- The recorded sessions are not certified for CME credit.

Enrollment

Online

To register using a credit card or AHC/electronic transfer, please visit: <https://ucla.cloud-cme.com/FetalEcho24> and click register.

*Credit card and check payments via phone, fax, or mail are no longer accepted.

Any questions, please email the UCLA CCPD Office at ccpd@mednet.ucla.edu, or call 310-794-2620.

Refunds

Cancellations must be received via email to ccpd@mednet.ucla.edu by Friday, September 20, 2024 and will be subject to a \$75 processing fee. No refunds will be granted after that date. If, for any reason, the course must be cancelled, discontinued, or rescheduled, a full refund will be provided.

Accreditation

The David Geffen School of Medicine at UCLA is accredited by the Accreditation Council for Continuing Medical Education to provide continuing medical education for physicians.

The David Geffen School of Medicine at UCLA, designates this live activity for a maximum of 8.00 *AMA PRA Category 1 Credits™*. Physicians should claim only the credit commensurate with the extent of their participation in the activity.

The California State Board of Registered Nursing accepts courses approved or the *AMA PRA Category 1 Credit™* as meeting the continuing education requirements for license renewal. Nurses from states other than California should inquire with their local State Board for specific continuing education policies.

Disclosure Statement

The FDA has issued a concept paper that classifies commercial support of scientific and educational programs as promotional unless it can be affirmed that the program is "truly independent" and free of commercial influence. In addition to independence, the FDA requires that non-promotional, commercially supported education be objective, balanced and scientifically rigorous. The policy further states that all potential conflicts of interest of the CME staff and faculty be fully disclosed to the program's participants. In addition, Accreditation Council for Continuing Medical Education policy mandates that the provider adequately manage all identified potential conflicts of interest prior to the program. UCLA fully endorses the letter and spirit of these concepts.

Thank you!

Special thanks to Hopeful Hearts and to the Ava Efune Fund for their support of this symposium and the UCLA Fetal Cardiology Program's efforts to improve prenatal detection of congenital heart disease.

Early registration is recommended, as space is limited.

This product (service) is not affiliated with or endorsed by Inteleos.™ ARDMS® and APCA™ are part of the Inteleos™ family of certification councils.

Please visit our website for other conference offerings at
<https://ucla.cloud-cme.com/default.aspx>

Fourteenth Annual UCLA Fetal Echocardiography Symposium
An In-Person and Live Virtual Education Conference

C10901

USA Residents: \$200

International Residents (non-USA): \$100

(Optional) Hands-on Workshop (4:10 pm to 5:15 pm): \$25

To add the hands-on workshop, registrants need to be enrolled in the in-person symposium

Limited spaces—reserve early!

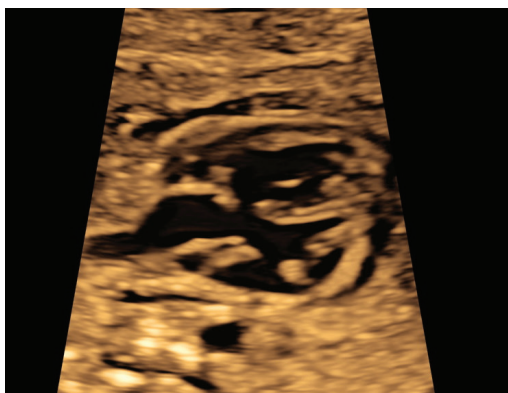
To register using a credit card or AHC/electronic transfer, please visit: <https://ucla.cloud-cme.com/FetalEcho24> and click register.

*Credit card and check payments via phone, fax, or mail are no longer accepted.

To register online,
please scan this QR code:



Questions: If you have questions about enrollment, please call (310) 794-2620 or email: ccpd@mednet.ucla.edu.



Course Description

The 14th Annual UCLA Fetal Echocardiography Symposium will take place on Saturday, October 19, 2024 at UCLA—live and in-person at the David Geffen School of Medicine, live-streamed around the world for those who cannot attend in person, and recorded for subsequent review at times convenient for you. This fourteenth annual symposium remains true to our mission of providing a single day full of clinical tips and pearls for everyone involved with fetal cardiac imaging in low-risk or high-risk pregnancies. This year's course, entirely revamped with an expanded faculty of expert clinicians and teachers, includes didactic lectures by world-class sonographers and maternal fetal medicine and pediatric cardiology subspecialists, along with two round-table discussions debating first the role of quantitative assessment in fetal cardiac imaging, and later the distinction between fetal cardiac screening and fetal echocardiography. Other highlights of this year's symposium will include testimonials from young patients with major forms of congenital heart disease, question/answer sessions with participation from the live and live-streamed audiences, insights and recommendations from an experienced attorney in the field, a live-scanning tutorial by one of our world-class experts, and a hands-on workshop for participants to scan actual patients towards the end of the afternoon.

As in prior years, if you are looking mainly for statistics or reviews of the literature, this course is not for you. But, if you are looking to improve your ability to scan or to interpret scans of the fetal heart, either for fetal cardiac screening or for fetal echocardiography, and to leave with invaluable clinical pearls and insights into the importance and challenges of both fetal cardiac screening and fetal echocardiography, this 14th annual fetal echocardiography symposium has been designed specifically for you. We look forward to welcoming you, or welcoming you back, on Saturday, October 19, 2024!

Target Audience

The 14th Annual UCLA Fetal Echocardiography Symposium is targeted toward all healthcare professionals seeking to improve their ability to scan and evaluate the fetal heart—both low risk fetal cardiac screening and high risk fetal echocardiography. The symposium is aimed specifically toward obstetric/cardiac sonographers, physicians (maternal-fetal medicine subspecialists, obstetricians, radiologists, and pediatric cardiologists), sonographers/fellows in training, and nurses and other healthcare professionals involved with the management of pregnancies complicated by fetal heart disease.

Learning Objectives

At the conclusion of this intensive, one-day symposium, participants will be able to:

- Discuss current guidelines for fetal cardiac screening and fetal echocardiography.
- Improve the basic approach to screening low risk pregnancies for fetal heart disease.
- Identify new ways to optimize image quality and angle of acquisition.
- Understand the optimal use of color flow Doppler in the evaluation of the fetal heart.
- Acquire high-quality images/clips of the four-chamber view, outflow tracts, and three-vessel views.
- Evaluate and diagnose fetal arrhythmias, major forms of heart disease, and ventricular dysfunction.

Course Director

Mark Sklansky, MD

Chief, Division of Pediatric Cardiology
James H. Nicholson Professor of Clinical Pediatrics
Director, Fetal Cardiology Program
Medical Director, UCLA Children's Heart Center
UCLA Mattel Children's Hospital
David Geffen School of Medicine at UCLA

Course Associate Director

Tracy Anton, BS, RDMS, RDCS, FAIUM

Assistant Clinical Professor
Department of Reproductive Medicine
Ultrasound Practitioner
University of California, San Diego

UCLA Faculty

Yalda Afshar, MD, PhD

Assistant Professor
Division of Maternal-Fetal Medicine
Department of Obstetrics and Gynecology
David Geffen School of Medicine at UCLA

Gary M. Satou, MD, FASE, FAHA

Clinical Professor of Pediatrics
Director, Pediatric Echocardiography
Co-Director, Fetal Cardiology Program
Division of Pediatric Cardiology
Department of Pediatrics
David Geffen School of Medicine at UCLA

Sonia Voleti, MD

Pediatric/Fetal Cardiology
Clinical Assistant Professor
Division of Pediatric Cardiology
Department of Pediatrics
David Geffen School of Medicine at UCLA

Guest Faculty

Greggory DeVore, MD, FACOG, FAIUM

Director, Fetal Diagnostic Centers
Pasadena, Tarzana, Lancaster, California

Nita Doshi, MD

Medical Director, CHOC Specialty Ambulatory Network
Medical Director, Fetal Cardiology
Division of Pediatric Cardiology
CHOC Children's Specialists

Fraser Golding, MD, FRCPC

Associate Clinical Professor of Pediatrics
Medical Director, Echocardiography
Rady's Children's Hospital
University of California, San Diego

Jeff Grass, Esq. (JD)

Managing Partner
Davis, Grass, Goldstein & Finlay

Pina Patel, MD

Pediatric Cardiologist
Children's Hospital Orange County
Assistant Professor, UC Irvine School of Medicine

Mishella Perez, BS, RDMS, RDCS, FAIUM

Clinical Ultrasound Educator
Division of Maternal Fetal Medicine
Department of Obstetrics and Gynecology
Scripps Clinic
San Diego, California

Jay Pruetz, MD, FASE

Associate Director, Guerin Family Congenital Heart Program
Director, Fetal Cardiology Program
Departments of Cardiology and Pediatrics and Obstetrics
Cedars Sinai Medical Center

Marybeth Tomory, RDMS (Abd, OBGYN, FE)

Advanced Practice Sonographer/Perinatal Sonographer
Access Telecare/Fetal Diagnostic Center of Arizona
Chandler, Arizona

Center for Continuing Professional Development
UCLA David Geffen School of Medicine
BOX 956938, 885 Tiverton Drive, Suite 300
Los Angeles, CA 90095-6938

NON-PROFIT ORG.
U.S. POSTAGE
PAID
UNIVERSITY OF CALIFORNIA,
LOS ANGELES

14th Annual
UCLA Fetal Echocardiography Symposium
An In-Person and Live Virtual
Education Conference

Saturday, October 19, 2024

Iris Cantor Auditorium
Geffen Hall, UCLA Campus
885 Tiverton Dr.
Los Angeles, CA 90095

